



Harmony &
Help **Group**

**BUSINESS
PROFILE**

LET US HELP YOU FIND HARMONY



Harmony & Help
Consultancy



Harmony & Help
Academy



Harmony & Help
Technology



Harmony & Help
Investment



Harmony & Help
Auditing

**LET US HELP YOU
FIND HARMONY**



Table of Contents

About Us	04
Our Core Values	05
Our Story	06
Our Value Proposition	07
Our Structure	08
Harmony and Help Consultancy	10
Harmony and Help Academy	13
Harmony and Help Technology	17
Harmony and Help Investment	22
Harmony and Help Auditing	25
Contact Us	27



ABOUT US



Harmony and Help is a prospering professional group, aiming to set a global benchmark in Safety, Health, Environmental, Quality and Governance, Risk and Compliance (SHEQ and GRC) integrated business solutions. Our name, embodying the essence of our services, reflects our commitment to assisting clients in achieving harmony through an integrated ecosystem of excellence across our divisions.

With over a quarter-century of technical expertise, we are proud of our Consulting, Technology, Academy, and Audit arms, each contributing to a comprehensive service offering. This multi-faceted approach ensures that our clients receive a seamless, holistic experience, addressing their diverse business needs. As we continue to grow and evolve, our vision is to become synonymous with innovation, quality, and transformative solutions, marking our presence on the global stage as a leader in professional services.

Furthermore, Harmony and Help Group (Pty) Ltd is a Level 1 Broad Based Black Economic Empowerment Entity that is 100% Woman Black Owned and this applies to its subsidiaries as well.

Vision Statement

To be the leading consulting, academy, technological and auditing firm that empowers businesses to achieve sustainable growth and innovation, creating a harmonious impact on communities and industries worldwide.

Mission Statement

Our mission is to nurture and develop a diverse portfolio of businesses by providing strategic guidance, resources, and support. We are committed to fostering innovation, operational excellence, and ethical practices, ensuring our subsidiaries thrive and contribute positively to society.



OUR CORE VALUES



Harmony &
Help Group

People First

Relationships are the foundation we build on. We believe that strong, collaborative relationships are essential for achieving positive outcomes. By taking the time to understand our clients' unique needs and challenges, we can develop tailored solutions that deliver lasting value.

Net Makers

We strive to create positive outcomes and maximize value for all. This extends beyond just our clients; we believe in fostering a ripple effect of positive change throughout the business ecosystem. We are committed to operating with integrity and social responsibility, and we actively seek ways to contribute to a more sustainable future.

Performance Built on Processes

Strong processes protect us, empower us to scale, and drive efficiency. We believe that well-defined processes are essential for delivering consistent, high-quality results. Our processes are designed to be efficient and adaptable, allowing us to meet the evolving needs of our clients.

Creative Problem Solver

Our clients trust us to turn hurdles into value, using creativity to deliver unique solutions. We understand that there is no one-size-fits-all solution to the challenges faced by businesses. We take a creative and collaborative approach to problem-solving, leveraging our expertise and experience to develop innovative solutions that meet our clients' specific needs.

Excellence Driven

We strive for the highest standards in our processes, risk management, and strategic guidance. We are committed to providing our clients with the best possible service. We hold ourselves to the highest ethical standards, and we are constantly looking for ways to improve our processes and deliver even greater value.



OUR STORY



HH Group was founded by Miriam Tenyane, a seasoned industry expert with decades of experience championing safety, sustainability, and operational excellence in top-level corporate roles. She recognized that many businesses, especially in the mid-size range, struggle to navigate the complexities of SHEQ and GRC compliance alone. With a deep commitment to making a positive impact, Miriam envisioned a different kind of consulting firm – one built on deep expertise, a nurturing approach, and a collaborative partnership model.



Miriam Tenyane
Founder & Managing Director

From the beginning, HH Group has prioritized empowering clients with tailored solutions, guidance, and the confidence to transform their organizations into beacons of safety, sustainability, and long-term success. Over the years, we've expanded our focus beyond SHEQ to embrace a holistic approach to business performance. Now offering integrated solutions across SHEQ and GCR Consulting, Academy, Technology, and Auditing, we help our clients streamline processes, mitigate risk, and achieve lasting growth.

We embrace innovation, leveraging data and technology to solve complex challenges. And, true to our roots, we remain deeply committed to our "people-first" philosophy, building strong relationships with our clients, our team, and the broader business community. We believe that by empowering our clients, we contribute to building a better, safer, and more sustainable future for all.



OUR VALUE PROPOSITION



Unparalleled Depth of Experience:

Our leadership team boasts over 25 years of combined experience tackling complex SHEQ & GRC challenges specifically for mid-to-large scale organizations. This depth of experience allows us to anticipate client needs, navigate intricate regulatory landscapes, and implement proven solutions that deliver maximum impact.

Industry-Specific Expertise:

We go beyond general SHEQ & GRC knowledge. Our consultants possess specialized industry certifications and in-depth understanding of the specific regulations and best practices applicable to your sector. This ensures tailored solutions that address your unique challenges and compliance requirements.

Nurturing Guide Partnership:

We believe in building strong, collaborative partnerships with our clients. Our Nurturing Guide approach combines our unmatched expertise with a supportive and transparent client relationship. We take the time to understand your goals, concerns, and risk profile, and then develop solutions that are customized to your specific needs.

Holistic Service Integration:

HH Group offers a unique integrated service model that encompasses Consulting, Academy, Technology, and Auditing divisions. This allows us to provide a comprehensive solution that addresses all aspects of your compliance, performance

optimization, and risk management needs. We seamlessly integrate our services to ensure all initiatives are aligned and working together to achieve your strategic objectives.

Data-Driven Innovation:

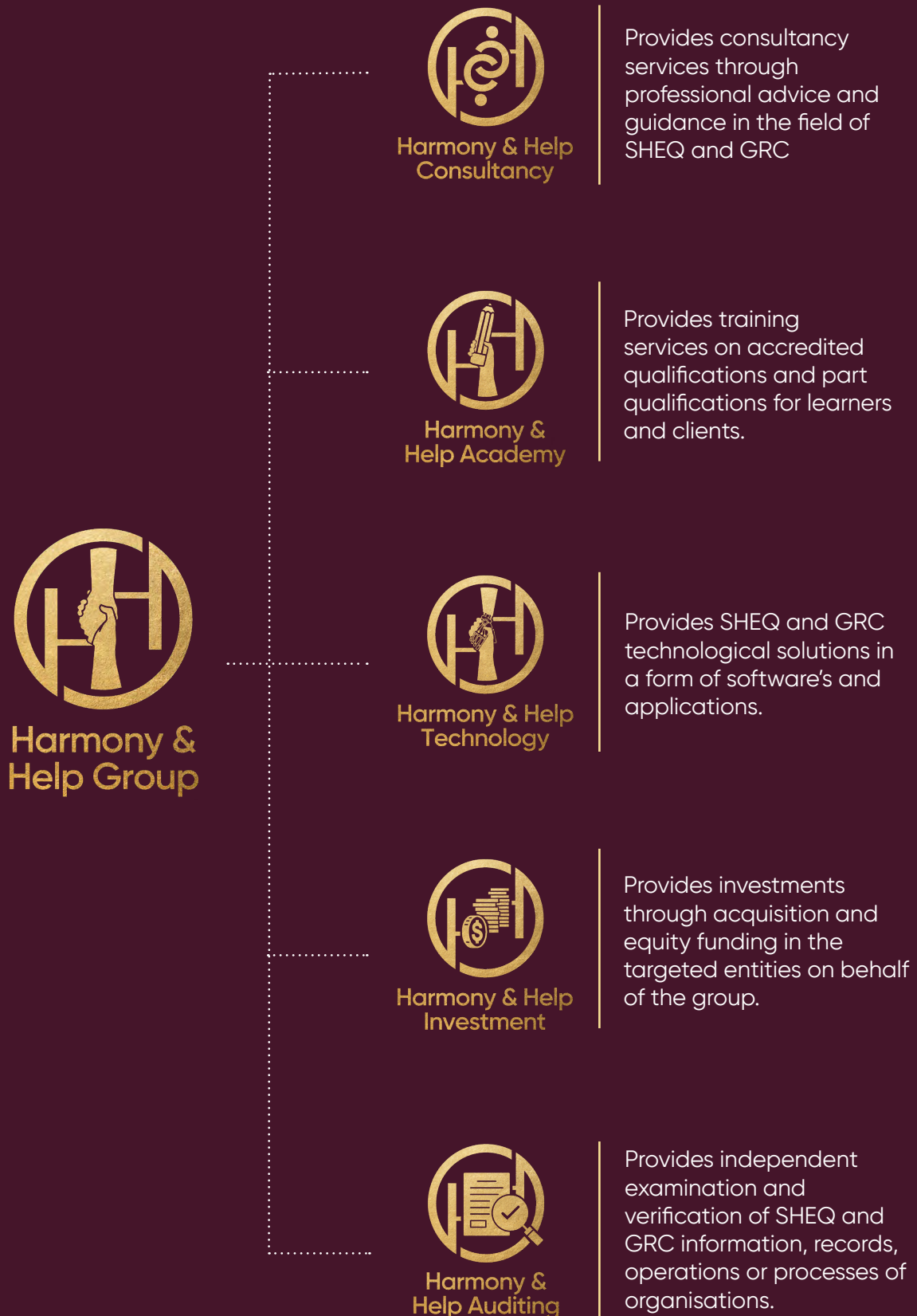
We leverage cutting-edge technology to empower our consultants and provide you with actionable insights. Our data-driven approach allows us to identify trends, optimise processes, and make data-backed recommendations that drive sustainable performance improvements.



*We go beyond
general SHEQ &
GRC knowledge.*



OUR STRUCTURE





**HARMONY AND HELP
CONSULTANCY**

The image shows a professional office environment. Two women, one with curly hair and a white blazer, and another with curly hair and a dark blazer, are smiling and shaking hands with a man in a dark suit. The man's face is partially visible on the right side of the frame. In the foreground, a laptop screen displays a data visualization with a bar chart and a line graph. The entire image has a red color overlay.



The Consulting arm of Harmony and Help is the cornerstone of the group, offering a wide array of professional services in Safety, Health, Environment and Quality (SHEQ), Governance, Risk and Compliance (GRC). This arm focuses on delivering end-to-end consulting services that are tailored to the unique needs of each client, leveraging their vast technical advisory expertise to assist clients in achieving organisational harmony and adherence to the highest standards in SHEQ and GRC practices.

Vision Statement

To be a leading consultancy renowned for fostering growth, innovation, and sustainability in businesses worldwide. We strive to create a harmonious balance between strategic insights and practical solutions, empowering organizations to achieve their fullest potential and make a positive impact in their area of expertise.

Mission Statement

To help organisations with our tested techniques and expertise in minimising exposures to compliance and governance flaws by providing tailor-made, integrated, systematic, seamless, and sustainable solutions.

CORE SERVICES

1. SHEQ Consulting:

- **Safety Management:** Develop and implement comprehensive safety management systems to ensure workplace safety and compliance with regulations.
- **Health Management:** Provide strategies and programs to promote occupational health and well-being among employees.
- **Environmental Management:** Assist organizations in minimizing their environmental impact through effective management and sustainable practices.
- **Quality Management:** Implement quality management systems to enhance product and service quality and achieve industry standards.

2. GRC Consulting:

- **Governance:** Design and strengthen governance frameworks to enhance accountability, transparency, and decision-making processes.
- **Risk Management:** Identify, assess, and mitigate risks to protect organizational assets and ensure operational continuity.
- **Compliance:** Ensure compliance with relevant laws, regulations, and industry standards through tailored compliance programs and audits.



3. Integrated SHEQ and GRC Solutions:

- **Policy Development:** Develop comprehensive SHEQ and GRC policies tailored to organizational needs and industry requirements.
- **System Implementation:** Assist with the deployment and implementation of SHEQ and GRC management systems, ensuring seamless integration with existing processes (All ISO related standards).

4. Continuous Improvement:

- **Performance Monitoring:** Implement monitoring systems to track SHEQ and GRC performance metrics and ensure continuous improvement.
- **Incident Investigation:** Provide expertise in investigating SHEQ incidents, identifying root causes, and recommending corrective actions.
- **Benchmarking:** Compare organizational performance against industry standards and best practices to identify areas for enhancement.

Expertise: Our team comprises seasoned professionals with extensive experience in SHEQ and GRC domains.

Customization: Tailor our services to meet the specific needs and challenges of each client, ensuring relevant and impactful outcomes.

Innovative Solutions: Leverage the latest technologies and methodologies to deliver state-of-the-art consulting services.

Ethical Practices: Adhere to the highest standards of ethics, confidentiality, and professionalism in all engagements.

Comprehensive Approach:
We offer integrated solutions that address all aspects of SHEQ and GRC, ensuring cohesive and effective management.

KEY DIFFERENTIATORS





**HARMONY AND HELP
ACADEMY**



At Harmony and Help Academy, we believe in nurturing the mind, body, and spirit through a holistic approach to education. Our academy is dedicated to providing a supportive and inclusive environment where every student can thrive and achieve their full potential.

WHY CHOOSE US?

- **Comprehensive Curriculum:** Our diverse and engaging curriculum is designed to inspire a love for learning and equip students with the skills they need for future success.
- **Experienced Facilitators:** Our passionate and dedicated facilitators are committed to fostering a positive and enriching learning experience for every student.
- **Holistic Development:** We focus on the overall well-being of our students, encouraging growth in academics and personal development.

About Us

The Academy arm of Harmony and Help is focused on delivering comprehensive educational programs and workshops. These programs are designed to equip individuals and organisations with the necessary skills and knowledge in SHEQ and GRC. The Academy offers accredited and part-accredited qualifications, leadership and management development programs, all offered through hybrid, in-person and online training platforms, ensuring a wide reach and flexibility for learning.

Visions Statement

To be one of the most distinguished Training Academy in the country through excellent content, value driven delivery and impactful training and skills development solutions.

Mission Statement

To empower professionals and organizations with the knowledge and skills required to excel in SHEQ and GRC, fostering a culture of safety, compliance, and continuous improvement.

Join Our Community

We invite you to explore our website to learn more about our programs, values, and the vibrant community at Harmony and Help Academy. Together, we can create a harmonious and supportive environment where students flourish.

www.harmonyandhelpgroup.com

**WELCOME TO THE
HARMONY AND HELP
ACADEMY FAMILY!**

SERVICES OFFERED

1. Training Programs:



SHEQ Training:

Courses on security, occupational health and safety, environmental management, and quality management systems.



GRC Training:

Courses on governance frameworks, risk management, and compliance strategies.



Certification Programs:

Accredited certifications in various SHEQ and GRC disciplines.

2. Professional Development:



Workshops and Seminars:

Interactive sessions on current industry trends and best practices.



Leadership Development:

Programs designed to enhance leadership skills and managerial effectiveness.



Continuing Education:

Opportunities for professionals to update their knowledge and skills regularly.



Target Audience

- 1. Professionals:** Individuals seeking to enhance their knowledge and skills in SHEQ and GRC disciplines.
- 2. Organizations:** Companies aiming to improve their SHEQ and GRC frameworks and achieve compliance with regulatory standards.
- 3. Industry Sectors:** Various sectors including manufacturing, construction, energy, logistics, healthcare, finance, and more.



Accreditations and Partnerships

The SHEQ and GRC Academy is accredited by several national bodies and maintains partnerships with leading organizations in the fields of safety, health, environment, quality, governance, risk management, and compliance. These accreditations and partnerships ensure the highest quality of training and provide recognition and credibility to our offerings.



Academy Scope

1. ISO Related Training

- ISO 14001:2015 Introduction
- ISO 14001:2015 Implementation
- ISO 14001:2015 Internal Auditor
- ISO 9001:2015 Introduction
- ISO 9001:2015 Implementation
- ISO 9001:2015 Internal Auditor
- ISO 45001:2018 Introduction
- ISO 45001:2018 Implementation
- ISO 45001:2018 Internal Auditor
- ISO 50001:2018 Introduction
- ISO 50001:2018 Implementation
- ISO 50001:2018 Internal Auditor
- All other critical ISO Standards

2. Safety, Health, Environmental and Quality Training

- SHE Representatives
- Basic Fire Fighting
- First Aider
- Emergency Coordinators
- Waste Management
- Pollution Prevention
- Natural Resource Preservation
- Supervisory SHE Training

3. Compliance Training

- Legal Liability
- Protection of Personal Information Act (POPIA)
- Competition Act
- Environmental Compliance
- Construction Regulations
- COID Act

4. Incident Management

- Incident Investigation
- Incident Commander
- Incident Officer
- Root Cause Analysis (RCA)
- Controlling Hazardous and Dangerous Goods

5. Corporate Governance Training

- Declaration of Interest Handling
- Delegation of Authority Management
- Environment, Social and Governance (ESG)

6. Risk Assessment Training

- Hazardous Identification and Risk Assessment (HIRA)
- Identification of Aspects and Impact
- Strategic Risk Assessments Management

Our Learning Mediums

At Harmony and Help Academy, we embrace a variety of learning mediums to provide our students with a rich, engaging, and versatile educational experience. These mediums are designed to cater to diverse learning styles and preferences, ensuring that each student can thrive.

Traditional Classroom Learning

- **Interactive Lessons:** Our traditional classroom settings are dynamic and interactive, encouraging students to actively participate in discussions, ask questions, and collaborate with their peers.
- **Qualified Facilitators:** Our experienced and passionate educators deliver lessons that are both informative and inspiring, fostering a love for learning in every student.

Digital Learning Platforms

- **Online Courses:** We offer a range of online courses that provide flexibility and accessibility, allowing students to learn at their own pace and convenience.

Blended Learning

- **Hybrid Classes:** Our blended learning

approach combines the best of traditional and digital learning. Students benefit from face-to-face interaction with teachers and peers while also accessing online resources and assignments.

- **Flipped Classrooms:** In our flipped classroom model, students review instructional materials at home and engage in interactive, hands-on activities in class, enhancing their understanding and application of concepts.

Experiential Learning Environments

- **Field Experiences:** Regular field trips and community projects offer students practical insights and real-world experiences, connecting classroom learning to the outside world.

By incorporating these diverse learning mediums, Harmony and Help Academy ensures that every student receives a comprehensive, engaging, and adaptive educational experience, preparing them for a successful future in an ever-changing world.





**HARMONY AND HELP
TECHNOLOGY**



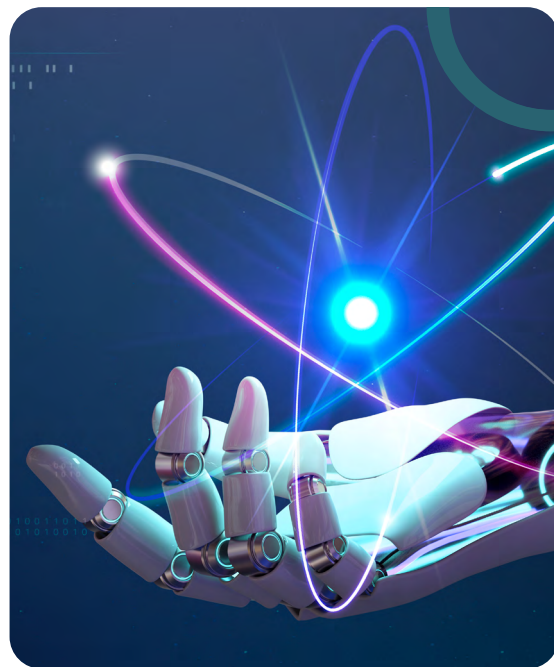
The Technology arm of Harmony and Help is dedicated to developing and providing innovative technological solutions and services. This includes specialised software for SHEQ and GRC management, data analytics, as well as cloud document data and storage management. The goal of this arm is to harness the power of technology to enhance operational efficiency and strategic decision-making for clients.

Vision Statement

To lead the way in creating SHEQ and GRC innovative solutions that empower entities, bridge gaps, and promote a harmonious and supportive digital environment.

Mission Statement

To empower organizations with innovative technology solutions that enhance Safety, Health, Environment, and Quality (SHEQ) management, and ensure robust Governance, Risk, and Compliance (GRC) frameworks.



CORE SERVICES

1. SHEQ Technology Solutions:

- **Safety Management Systems:** Develop and implement software solutions to manage workplace safety, incident reporting, and safety audits.
- **Health Management Systems:** Provide technology to monitor employee health, manage occupational health risks, and ensure compliance with health regulations.
- **Environmental Management Systems:** Create tools for tracking environmental impact, managing sustainability initiatives, and ensuring regulatory compliance.
- **Quality Management Systems:** Develop software for quality control, process improvement, and compliance with industry standards.

2. GRC Technology Solutions:

- **Risk Management Software:** Design and deploy solutions for identifying, assessing, and mitigating risks across the organization.
- **Compliance Management Systems:** Provide tools to ensure adherence to regulatory requirements and industry standards, including automated compliance tracking and reporting.
- **Governance Solutions:** Develop frameworks and tools to enhance corporate governance, accountability, and transparency.
- **Audit Management Systems:** Implement software to streamline audit processes, manage audit trails, and ensure comprehensive reporting.

3. Consulting Services:

- **Technology Advisory:** Offer strategic guidance on selecting and implementing the right technology solutions to meet SHEQ and GRC objectives.
- **System Integration:** Ensure seamless integration of SHEQ and GRC technologies with existing systems and processes.
- **Custom Software Development:** Design and build custom software solutions tailored to the specific needs of clients.
- **Data Analytics and Reporting:** Provide advanced analytics and reporting tools to gain insights into SHEQ and GRC performance and make data-driven decisions.

4. Training and Support:

- **User Training:** Offer comprehensive training programs to ensure users can effectively utilize SHEQ and GRC technology solutions.
- **Technical Support:** Provide ongoing technical support and maintenance services to ensure system reliability and performance.
- **Continuous Improvement:** Regularly update and enhance technology solutions to keep pace with evolving industry standards and regulatory requirements.

KEY DIFFERENTIATORS

- **Innovative Solutions:** Leverage the latest technologies to develop cutting-edge SHEQ and GRC solutions.
- **Customization:** Tailor technology solutions to meet the unique needs and challenges of each client.
- **Expertise:** Combine deep industry knowledge with technical expertise to deliver effective and efficient solutions.
- **Comprehensive Approach:** Offer end-to-end services from consulting and development to training and support.
- **Commitment to Excellence:** Adhere to the highest standards of quality, ethics, and customer satisfaction in all engagements.

HARMONY AND HELP EXISTING TECHNOLOGY SOLUTIONS

Harmony Universe: Safety, Health and Environmental (SHE) Legal Register

1. System Overview

Purpose:

- Ensure compliance with local, national, and international safety, health, and environmental regulations.
- Provide a centralized database for applicable SHE legal requirements and obligations.
- Facilitate risk management and continuous improvement in SHE performance.

Scope:

- Applicable to operational activities applicable to the specific industry requirements.
- Covers laws, regulations, standards, and best practices related to SHE.

2. Key Features

Legal Requirements Database:

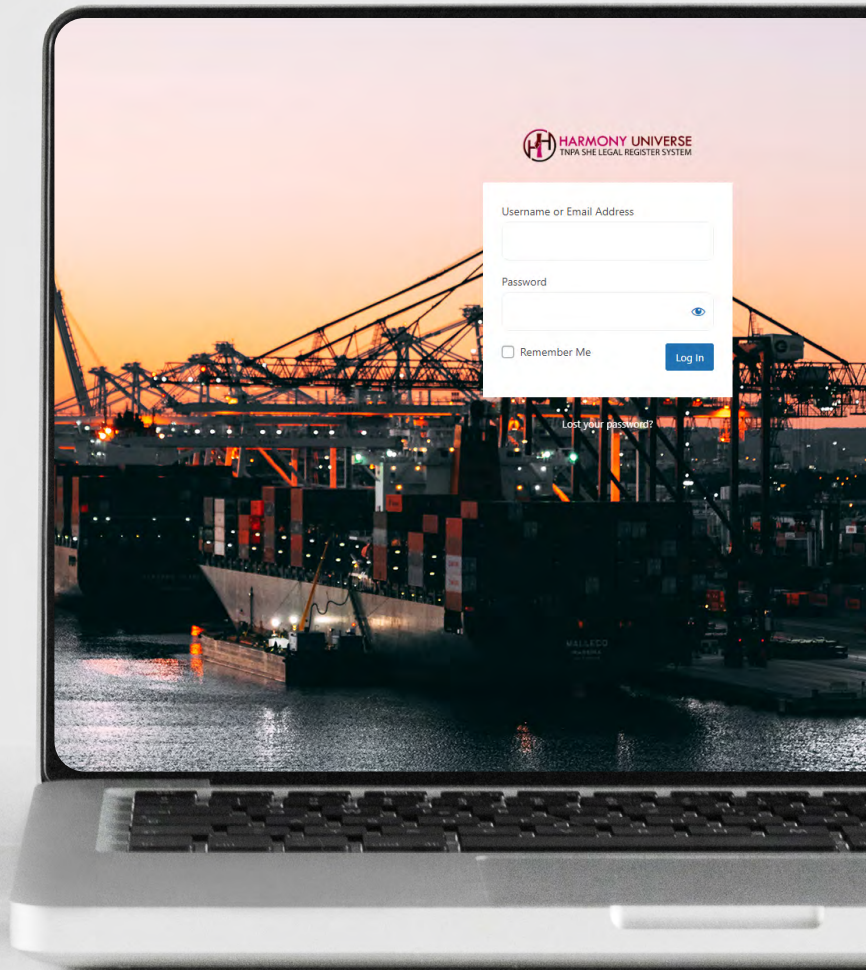
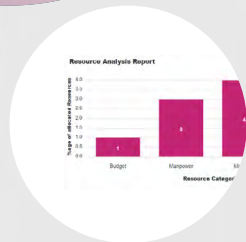
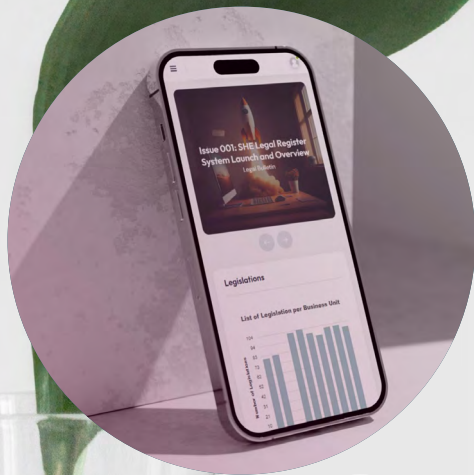
- Comprehensive and up-to-date database of SHE-related legal requirements.
- Categorization by jurisdiction (local, national, international), topic (safety, health, environment), and specific industry requirements.

Compliance Management:

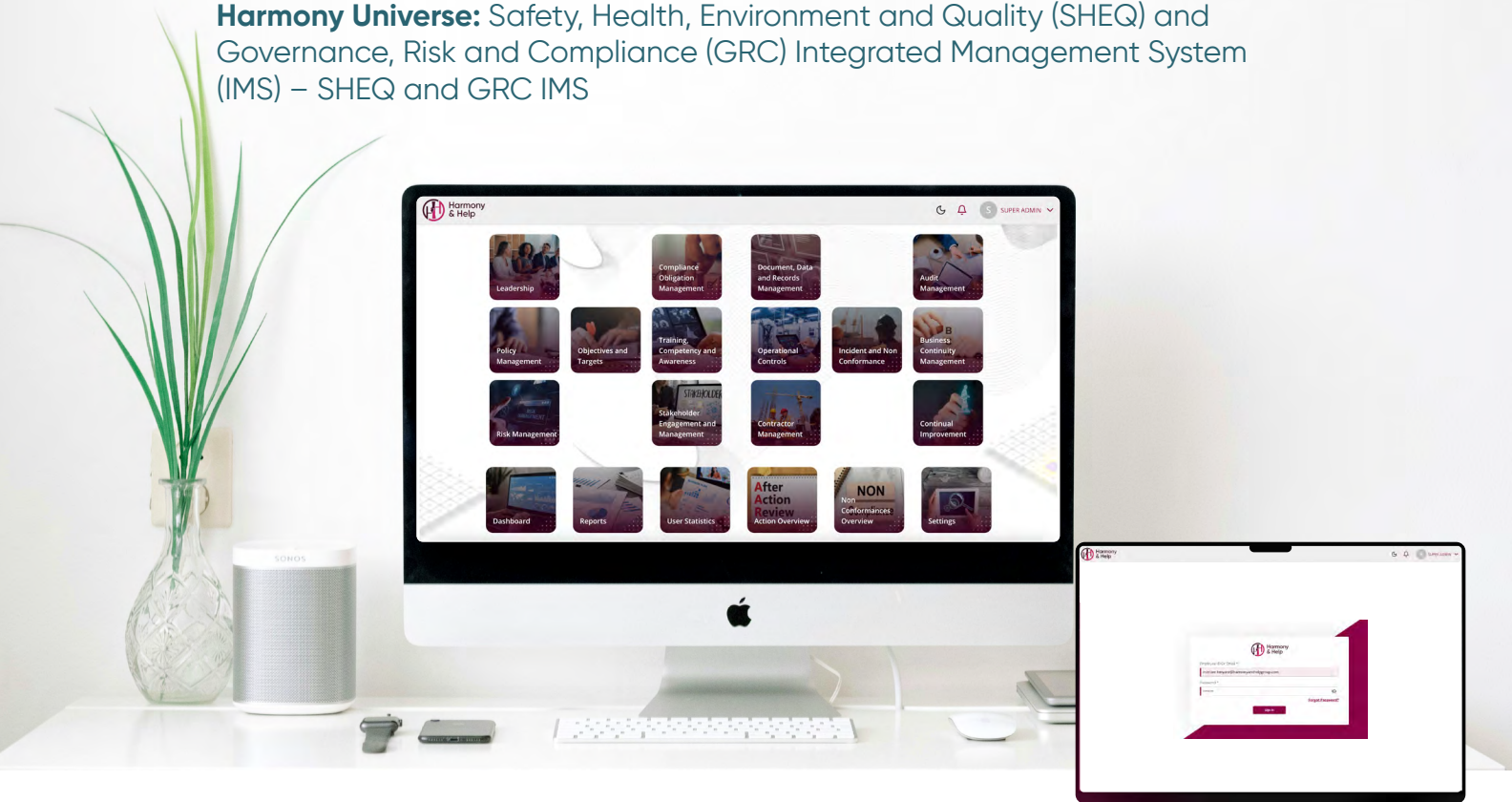
- Tools for tracking compliance status with each legal requirement.
- Monthly alerts and reminders for upcoming compliance deadlines or changes in legislation.

Document Management:

- Centralized repository for all relevant documents, including permits, licenses, inspection reports, and compliance certificates.
- Version control and audit trail for document changes and approvals.



Harmony Universe: Safety, Health, Environment and Quality (SHEQ) and Governance, Risk and Compliance (GRC) Integrated Management System (IMS) – SHEQ and GRC IMS



1. System Overview

Purpose:

- Integrate SHEQ and GRC processes into a single unified platform.
- Improve efficiency, reduce risks, and ensure compliance with regulatory requirements.
- Enhance organizational performance through continuous monitoring and improvement.

Scope:

- Applicable across various industries irrespective of the size and complexity.
- Covers a wide range of ISO standards requirements, regulations requirements, and best practices for SHEQ and GRC.

3. Benefits

Improved Efficiency:

- Streamlined processes and reduced duplication of efforts.

Enhanced Compliance:

- Proactive compliance management and reduced risk of non-compliance.

Risk Reduction:

- Comprehensive risk management and mitigation strategies.

Better Decision-Making:

- Enhanced reporting capabilities for informed decision-making.

Continuous Improvement:

- Ongoing monitoring and evaluation of SHEQ and GRC performance.

2. Key Features

Centralized Database:

- Unified transactional system for all SHEQ and GRC-related requirements.

Compliance Management:

- Tracks and manage compliance with legal, regulatory, and internal requirements.

Risk Management:

- Have tools for identifying, assessing, and mitigating risks related to safety, health, environment, quality, and compliance.

Audit Management:

- Schedule, conduct, and document internal and external audits.
- e. Incident and Accident Reporting:
 - Report, investigate, and analyze incidents, accidents, and near misses.

Training and Competency Management:

- Track employee training schedule and execution, certifications, and competencies.

Performance Monitoring and Reporting:

- Key Performance Indicators (KPIs) and dashboards for SHEQ and GRC metrics.

Integration Capabilities:

- Capable of integrating with other enterprise systems such as ERP, HRMS, and CRM

Call us for an assessment of your requirements and therefore enabling us to tailor the system to meet your specific organizational needs.



A young woman with short dark hair, wearing a white t-shirt and gold hoop earrings, is smiling broadly. She is holding a large, light pink piggy bank in her right hand. The background is a solid light blue color.

**HARMONY AND HELP
INVESTMENT**

HARMONY AND HELP INVESTMENT



Harmony &
Help **Investment**

The Harmony and Help Investment arm is focused and dedicated to generating sustainable returns while promoting positive social and environmental impact. Our core philosophy integrates financial growth with ethical investing, ensuring that our portfolio not only performs well but also aligns with the values of environmental stewardship, social responsibility, and corporate governance (ESG).

Vision Statement

To be a global leader in ethical investment management, transforming the financial industry by proving that investing with conscience yields substantial returns and fosters a better world for future generations.

Mission Statement

To foster financial growth through responsible investing that supports environmental sustainability, social equity, and sound governance practices.

Investment Philosophy

Our investment philosophy revolves around the integration of ESG criteria into our decision-making process. We believe that companies with strong ESG practices are better positioned for long-term success and pose lower risks. This approach helps us to identify and invest in businesses that are not only financially robust but also contribute positively to society and the environment.



SERVICES OFFERED

- 1. Impact Investing:** Identifying and investing in companies, organizations, and funds that generate measurable social and environmental impact alongside a financial return.
- 2. Advisory Services:** Expert advice on integrating ESG factors into investment strategies for other investment firms and financial institutions.



Competitive Advantage

1. Expertise in ESG Investing:

A dedicated team of analysts and portfolio managers with deep expertise in ESG criteria and sustainable investing.

2. Robust Research:

Extensive research capabilities to identify and evaluate investment opportunities that meet our stringent ESG standards.

3. Personalized Service: Customized investment solutions and personalized service tailored to meet the unique needs of each client.

4. Transparency and Reporting:

Regular, transparent reporting on the financial performance and social/environmental impact of investments.

Impact Measurement

We utilize a robust framework to measure the impact of our investments, ensuring that our clients can see the tangible benefits of their investments in social and environmental terms. This includes:

- **Carbon Footprint Analysis:** Measuring and reporting the

carbon emissions associated with our portfolio.

- **Social Impact Metrics:** Tracking contributions to social goals such as job creation, education, and health improvements.
- **Governance Scores:** Evaluating the governance practices of the companies in our portfolio to ensure they meet high ethical standards.

Key Partnerships

- **Environmental Organizations:** Collaborating with leading environmental groups to stay at the forefront of sustainability practices.
- **Social Enterprises:** Partnering with social enterprises to identify investment opportunities that generate significant social impact.
- **Research Institutions:** Working with academic and research institutions to continuously improve our ESG evaluation methodologies.

Harmony and Help Investment Portfolio is dedicated to creating a positive impact through responsible investing. Our comprehensive approach, combining financial acumen with a commitment to sustainability, positions us as a leader in the growing field of ethical investment. We invite you to join us in our mission to generate substantial financial returns while making a meaningful difference in the world.



A close-up photograph of a person's hand holding a black pen, poised to write on a document. The document features a bar chart with blue and orange bars, a pie chart, and a line graph. To the left, a calculator is visible. The background shows another person's hand holding a pen over a notebook. The entire image is overlaid with a semi-transparent reddish-brown filter.

**HARMONY AND HELP
AUDITING**

HARMONY AND HELP AUDITING



Harmony &
Help **Auditing**

The Auditing arm of Harmony and Help Business provides extensive SHEQ & GRC related services, encompassing both internal and external audits. This arm aims to offer independent evaluations of systems, processes, and controls to ensure integrity, compliance, and identification of improvement areas for clients.

Vision Statement

To be the benchmark of excellence in the auditing industry, recognized for our integrity, precision, and dedication to fostering trust and transparency.

Mission Statement

To provide comprehensive, reliable, and insightful auditing and consulting services that empower organizations to achieve regulatory compliance, enhance governance, and manage risks effectively.



CORE SERVICES

1. Auditing Services:

- **Internal Audits:** Evaluate and improve the effectiveness of risk management, control, and governance processes.
- **Compliance Audits:** Assess adherence to regulatory requirements and industry standards.

2. Governance, Risk, and Compliance (GRC) Services:

- **Risk Management:** Identify, assess,

and mitigate risks to protect organizational assets and ensure continuity.

- **Regulatory Compliance:** Ensure compliance with relevant laws, regulations, and industry standards.
- **Corporate Governance:** Develop and implement governance frameworks to enhance accountability and transparency.

3. Sustainability, Health, Environment, and Governance (SHEG) Services:

- **Sustainability Audits:** Evaluate environmental and social impact and provide strategies for sustainable business practices.
- **Health and Safety Audits:** Assess workplace health and safety standards to ensure a safe working environment.
- **Environmental Audits:** Identify environmental risks and recommend measures to minimize ecological footprints.
- **Governance Audits:** Review and enhance governance structures and processes.

Value Proposition

1. Comprehensive Audit Services:

Harmony and Help Auditing Firm offers a full range of audit services, ensuring compliance with regulatory requirements and providing assurance to stakeholders. Our services include SHEQ and GRC internal audits, compliance audits, and special purpose audits.

2. Expertise and Experience:

Our team comprises highly qualified professionals with extensive experience in various industries. We leverage our deep industry knowledge and technical expertise to deliver insightful, accurate, and reliable audit services.

3. Tailored Solutions:

We understand that each client is unique, and we tailor our audit approach to meet the specific needs and challenges of your business. Our customized solutions ensure that we address your particular concerns and objectives.

4. Innovative Technology:

Utilizing the latest audit technologies and tools, we enhance the efficiency and effectiveness of our audit processes. Our innovative approach helps in identifying risks, improving controls, and providing valuable insights.

5. Commitment to Quality:

Quality is at the core of our service

delivery. We adhere to stringent quality control standards and continually update our methodologies to reflect best practices and regulatory changes. Our commitment to excellence ensures that we deliver high-quality audit reports.

6. Transparent Communication:

We maintain open and transparent communication with our clients throughout the audit process. Our goal is to ensure that you are informed and engaged, providing regular updates and clear, concise reporting.

7. Value-Added Insights:

Beyond compliance, we provide actionable insights that help improve your business operations. Our audit findings often highlight opportunities for process improvements, cost savings, and enhanced governance.

8. Ethical Standards:

We operate with the highest level of integrity and ethical standards. Our firm is committed to maintaining the trust and confidence of our clients by upholding principles of honesty, objectivity, and professional behaviour.

9. Client-Centric Approach:

Your satisfaction is our priority. We build long-term relationships by understanding your business needs, responding promptly to your queries, and delivering services that exceed your expectations.

10. Global Reach with Local Expertise:

With a network of affiliates and partners, we offer global expertise with local market knowledge. This combination allows us to serve multinational clients effectively while understanding the nuances of local regulations and practices. Harmony and Help Auditing Firm is dedicated to supporting your business's success through high-quality, insightful, and reliable audit services. Partner with us to experience the difference that a client-focused, innovative, and ethical auditing firm can make.

Regardless of the type of task or objective your organisation may need to accomplish and / or achieve, Harmony and Help Group (Pty) Ltd will be there to assist in an efficient and cost-effective possible way.

**LET US HELP YOU
FIND HARMONY**

Thank you for taking time to read our business profile.

We are here to assist you with your consultancy, academy, technology, investment and auditing needs and ensure you receive the best service possible. If you have any questions, need further information, or wish to schedule a consultation, please do not hesitate to reach out to us.

Email: info@harmonyandhelpgroup.com
Phone: **+27 81 048 0856 / +27 83 285 3397**
Address: **90 Bekker Street, Midrand, 1686**
Website: www.harmonyandhelpgroup.com

Office Hours:

Monday to Friday: **8:00 AM - 6:00 PM**
Saturday and Sunday: **Closed**



***“LET US HELP YOU
FIND HARMONY”***



**Harmony &
Help Group**